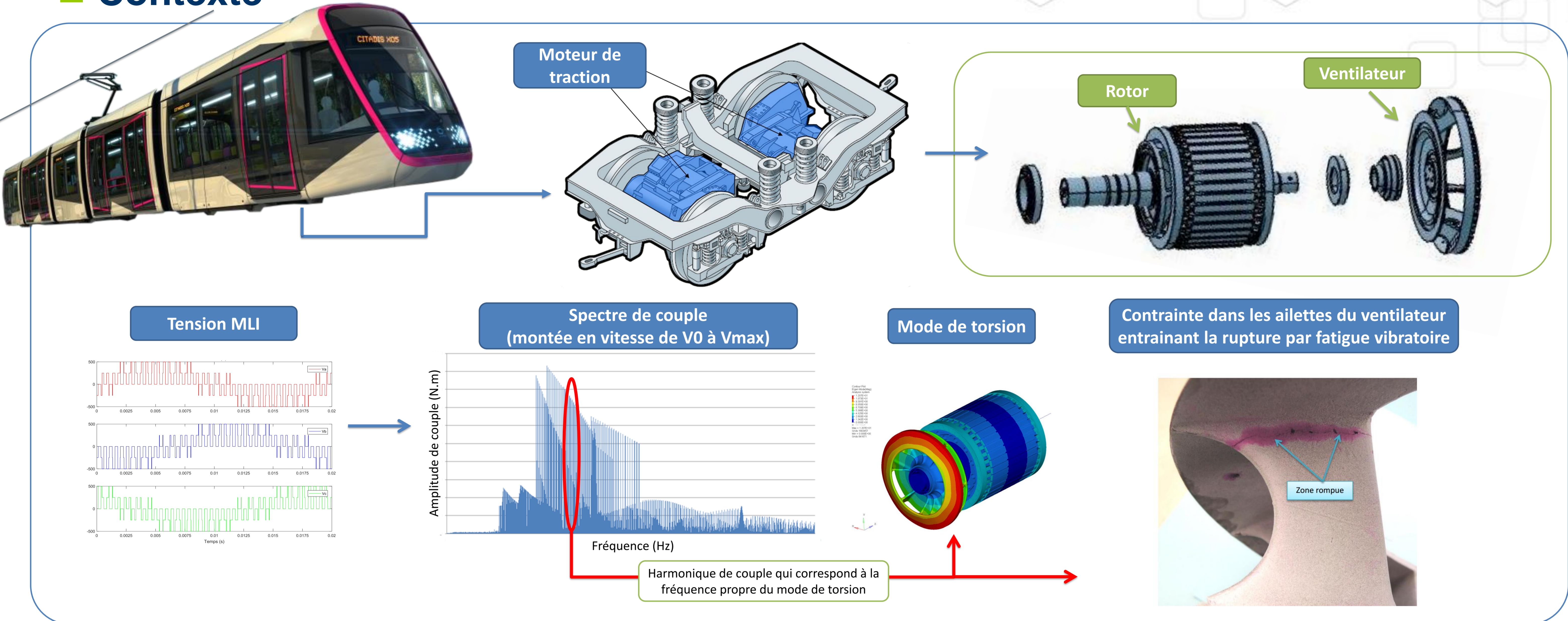


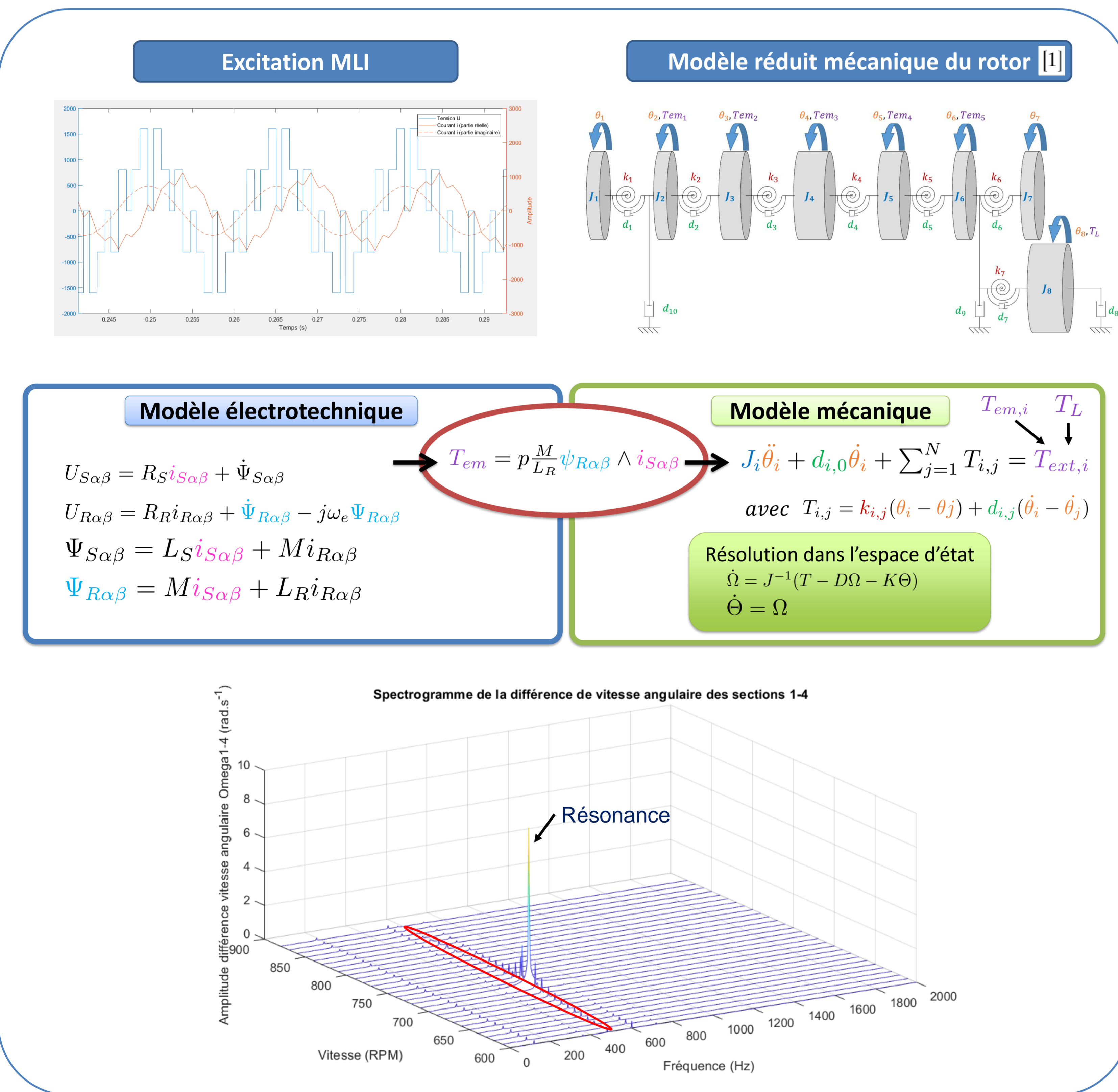
Margaux Topenot⁽¹⁾, Gael Chevallier⁽²⁾, Morvan Ouisse⁽²⁾, Damien Vaillant⁽³⁾

(1) Alstom/UBFC, (2) UBFC, (3) Alstom

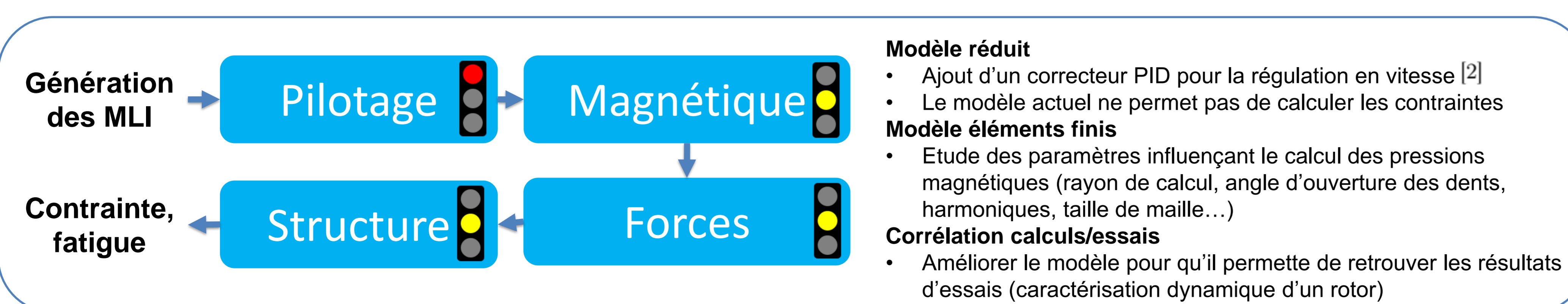
Contexte



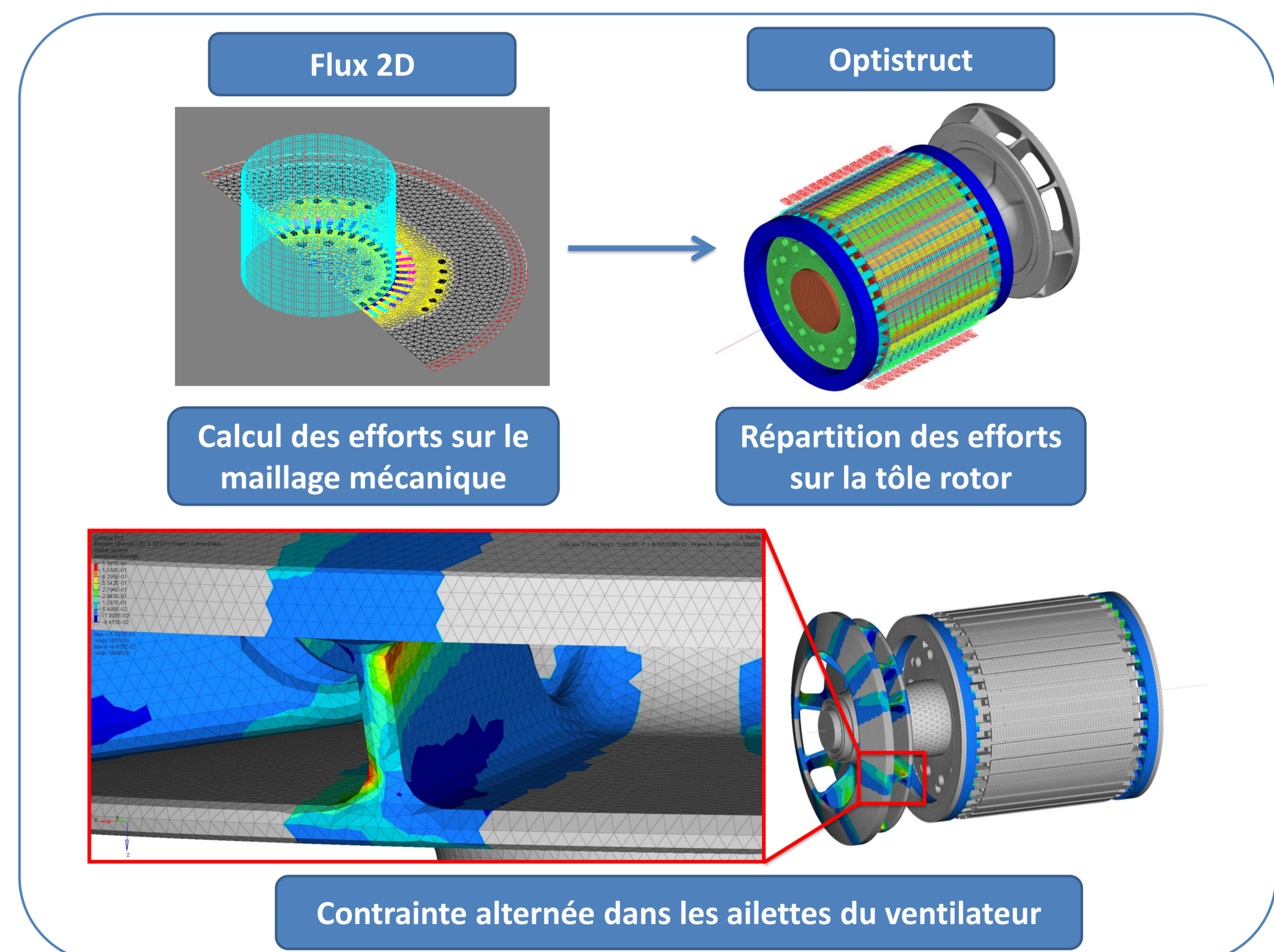
Modèle réduit



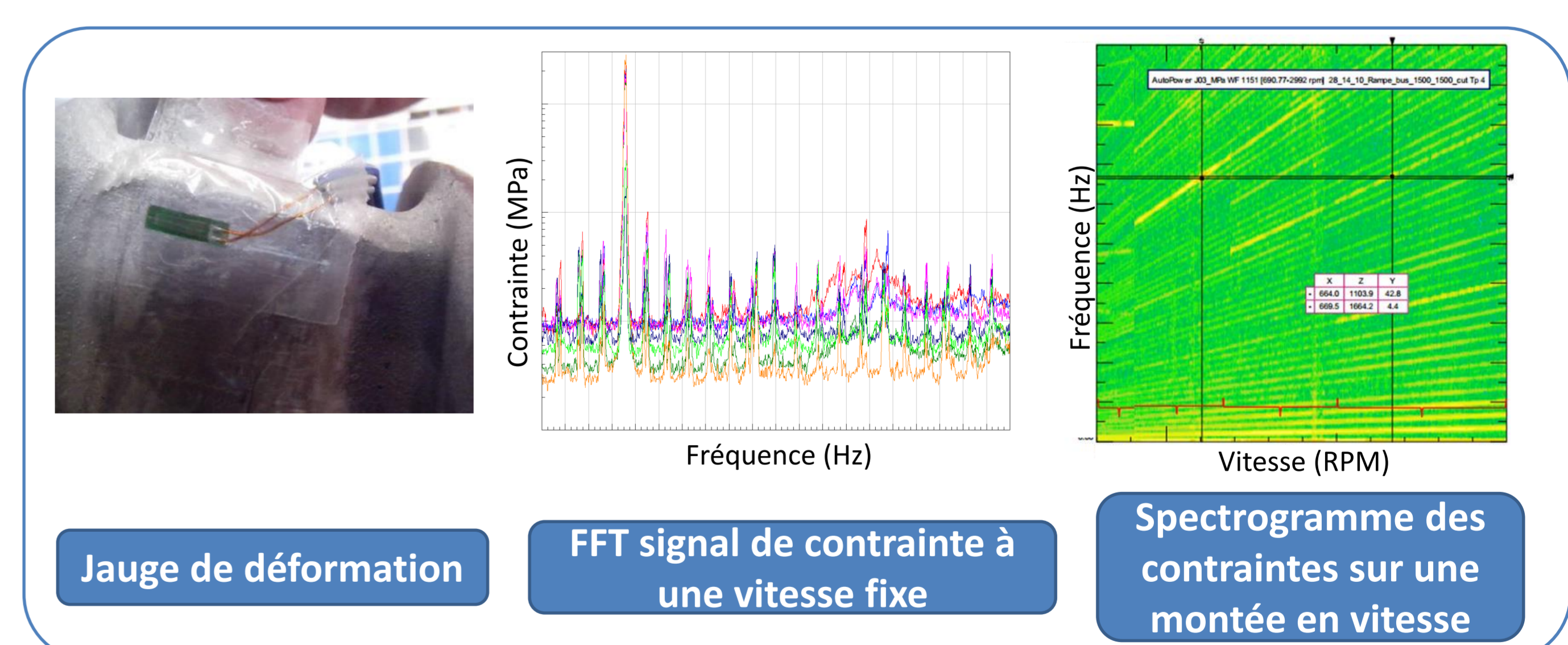
Perspectives



Modèle éléments finis



Corrélation calculs/essais



Références

- [1] Bruzzese. Electromechanical modeling of a railway induction drive prone to cage vibration failures. In *IECON 2016 - 42nd Annual Conference of the IEEE Industrial Electronics Society*. IEEE, 2016.
- [2] Wang, Chai, Yoo, Gan, and Ng. *PID and predictive control of electrical drives and power converters using MATLAB/Simulink*. Wiley IEEE Press, 2015.